

CENTRAL UMBRELLA OF WATER AND SANITATION



Special points of interest:

- What is cUws
- Area of Coverage
- Objectives of cUws
- Management Structure of cUws
- Current registered member Schemes
- Functions of cUws
- Sources of Funding to cUws
- How to be a member of cUws
- Contact Address

What is Central Umbrella of Water and Sanitation (cUws)?

cUws is an organization that brings together all Water Supply and Sanitation Boards (WSSBs) to collectively solve their problems without waiting for Government's intervention. Its geared towards ensuring the Operation and maintenance of piped water systems and enhancing sustainability of the these systems based on management responsibility and ownership by users.

Creation of cUws:

The Ministry of Water and Environment and other partners have constructed numerous piped water systems over the years across the country. Operation and maintenance of these systems, however, remains a daunting challenge to the sector which requires creative approaches to address. One of such interventions has been establishment of umbrella organisations to assist piped water supply schemes in operation and maintenance matters.

The idea of forming an umbrella organisation was birthed after most piped water supply systems implemented under the Ministry of Water and Environment especially in the South Western Towns Water and Sanitation Project realised that they were facing a lot of problems related to management, operation and maintenance of the completed schemes. Subsequently several consultations were made with various stakeholders such as the scheme operators, the local authorities, the district water officers and some development partners. There was consensus that cooperation in those areas that proved difficult for individual schemes (e.g. provision of scarce spare parts & tools, financial monitoring, water quality analysis and training) be encouraged, and this would be possible through an established organisation. As a result an association of water and sanitation schemes in the South Western region of Uganda was formed (the South Western Umbrella of Water and Sanitation). From the experiences and benefits reaped by the schemes from the first umbrella organisation, other umbrella organisations have been formed namely Eastern, Mid-Western, Northern and Central umbrella organisations in order to cover the entire country.

The Central Umbrella of Water and Sanitation comprises of schemes from the central region of Uganda. The districts covered include Wakiso, Kiboga, Luwero, Nakasongola, Kyankwanzi, Masaka, Bukomansimbi, Kalungu, Mukono, Kayunga, Kalangala, Buvuma, Lyantonde, Sembabule, Rakai, Masindi, Hoima, Bullisa, Mpigi, Lwengo, Nakaseke, Butambala, Buikwe, Gomba and Kiryandongo

Objective of cUws:

The main objective of the umbrella organisation is to enhance the sustainability of water and sanitation services in the region through improved operation and maintenance of member schemes.

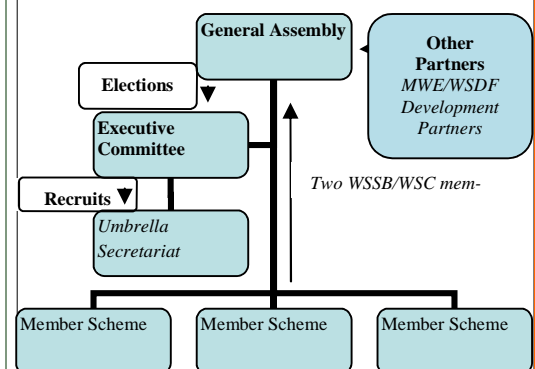
Organisation of the Central Umbrella

All piped water supply and sanitation systems in the central region are encouraged to be members of the umbrella organization. The schemes should have an active WSS Board/committee that oversees the running of the scheme.

From each WSSB/WSC, two representatives are selected and together with their DWOs form the General Assembly, which is responsible for formulating and reviewing policies that govern the umbrella organization.

From the General Assembly, an executive committee comprising of about 11 people is formed and should be gender sensitive. Key positions include Chairperson, Treasurer, Secretary, and committee members. The Executive Committee is charged with the responsibility of supervising the umbrella activities and ensuring that the implemented activities conform to those approved by the General Assembly. Staff from WSDFs and MWE are co-opted to offer technical advice to the committee.

A secretariat comprised of technical staff is constituted and is responsible for day to day activities of the umbrella organization.



Organization Structure:

Funding:

Umbrella activities are financed through the following sources:

- Membership and subscription fees from member schemes
- Internally generated revenue from services

Current registered member Schemes:

	Masindi
	26. Biconzi WSSS
	27. Bwijanga WSSS
Buikwe	Mpigi
1. Buikwe WSSS	28. Bujuuko WSSS
Bukomansimbi	29. Mpigi WSSS
2. Bukomansimbi WSSS	
Bulisa	Mukono
3. Wanseko WSSS	30. Nakifuma WSSS
4. Biiso WSSS	31. Lulagwe WSSS
5. Bulisa WSSS	Nakaseke
Kalungu	32. Semuto WSSS
6. Lukaya WSSS	32. Nakaseke WSSS
7. Kalungu WSSS	Nakasongola
Kayunga	33. Kakooge WSSS
8. Kayunga WSSS	34. Migeera WSSS
9. Nazigo WSSS	35. Nakasongola WSSS
10. Kangurumira WSSS	
Kibogo	Rakai
11. Kibogo WSSS	36. Kyotera WSSS
12. Bukomero WSSS	37. Rakai WSSS
Kiryandongo	38. Sanjee WSSS
13. Kiryandongo WSSS	39. Buyamba WSSS
14. Bweyale WSSS	40. Kasensero WSSS
Kyankwanzi	41. Kakyanga WSSS
15. Ntwentwe WSSS	42. Kakuuto WSSS
Luwero	43. Mutukula WSSS
16. Bombo WSSS	Sembabule
17. Wobulenzi WSSS	44. Lwebitakuli WSSS
18. Zirobwa WSSS	45. Matete WSSS
Lwengo	46. Ntuusi WSSS
19. Kinoni WSSS	Wakiso
20. Lwengo WSSS	47. Nakawuka WSSS
21. Kyazanga WSSS	48. Kakiri WSSS
Lyantonde	49. Wakiso WSSS
22. Kinuuka WSSS	50. Namayumba WSSS
23. Kasagama WSSS	51. Kasanje WSSS
24. Lyantonde WSSS	
Masaka	
25. Mpugwe WSSS	

How to Join

Sustainability of the Umbrella Organization is dependent upon active membership of all schemes in the region. Membership is through the following steps:

- Formally applying to the Manager of the Umbrella Organization.
- After receipt of the letter expressing interest in joining, the Umbrella secretariat carries out an assessment of the scheme to acquaint themselves with the technical, financial and social aspects.
- Once the scheme is approved, a membership and subscription fee is paid and subsequently, a monthly subscription is also paid and a certificate of registration is issued to the scheme (secretariat to advise on suitable amounts).
- Two representatives are submitted to the General Assembly of the Umbrella organization and they are the Chairperson and a member of the WSSB elected by the Board and one of whom must be female.

Functions of the Central Umbrella

1. Offering legal, technical, and organisational advice and representation to member schemes.
2. Monitoring water quality in the schemes.
3. Facilitate access to scarce spare parts and tools.
4. Assist in leakage detection, installation and replacement of meters.
5. Offering capacity building in specialised areas such as financial monitoring, technical aspects and others as the needs arise.
6. Serving as an information desk for interested persons, local authorities and other partners.
7. General and timely supervision and monitoring of schemes
8. Reporting to DWD/MWE and development partners on the operations of the member schemes



Above: Technical backup to member schemes: cUWS technical team inspecting the pumping system of one of its member schemes.



Above: Capacity building to WSSBs: A training session in progress for one of cUWS member schemes

For more information contact:

Central Umbrella of Water and Sanitation
Wakiso District Headquarters
P. O. Box 80
Wakiso-Uganda
Tel.: +256 312 202150
Email: central.umbrella2011@gmail.com