

PRESENTATION ON UMBRELLA ORGANISATIONS

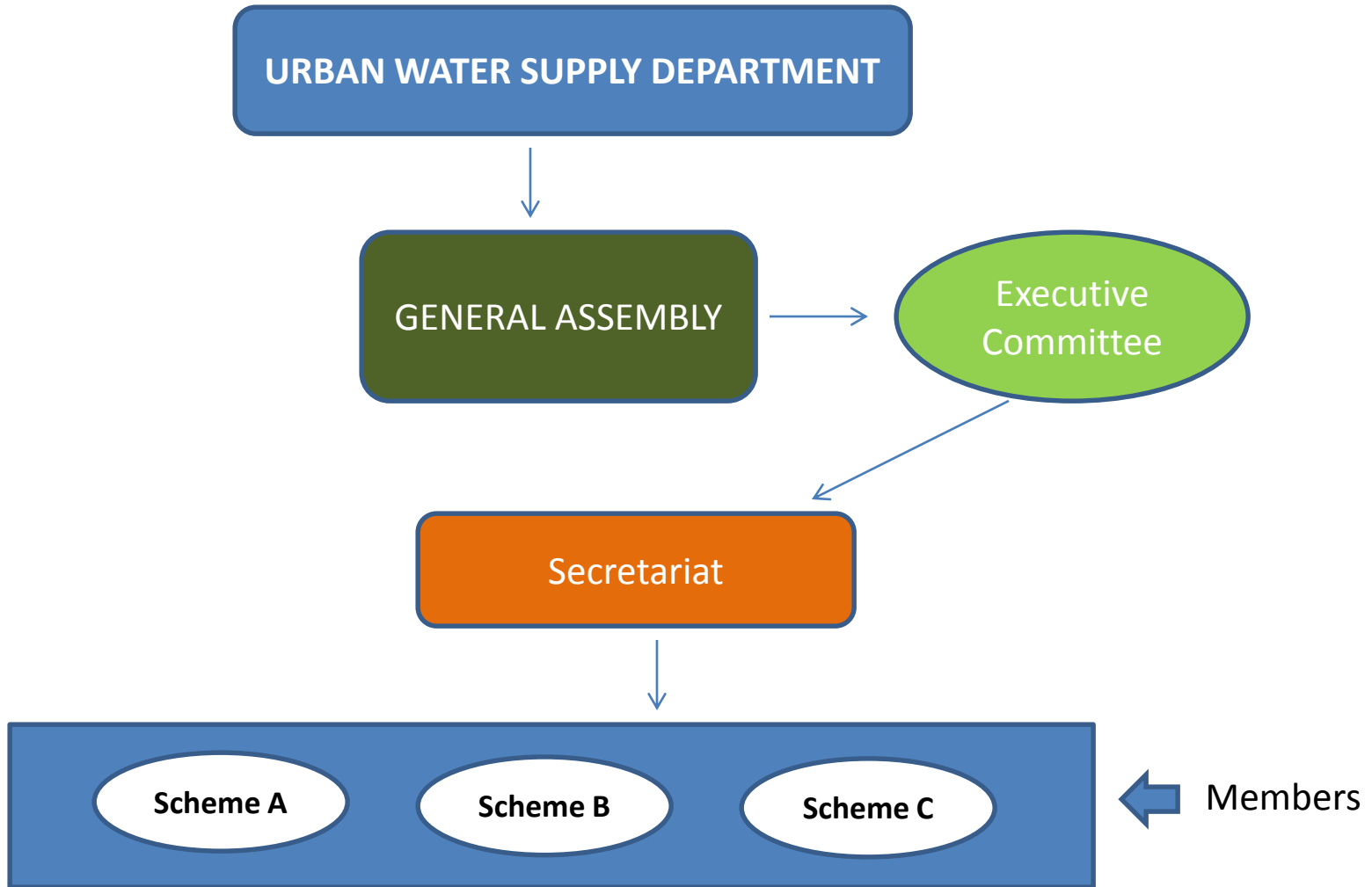
DECEMBER 2012

The Genesis of the Umbrella Concept

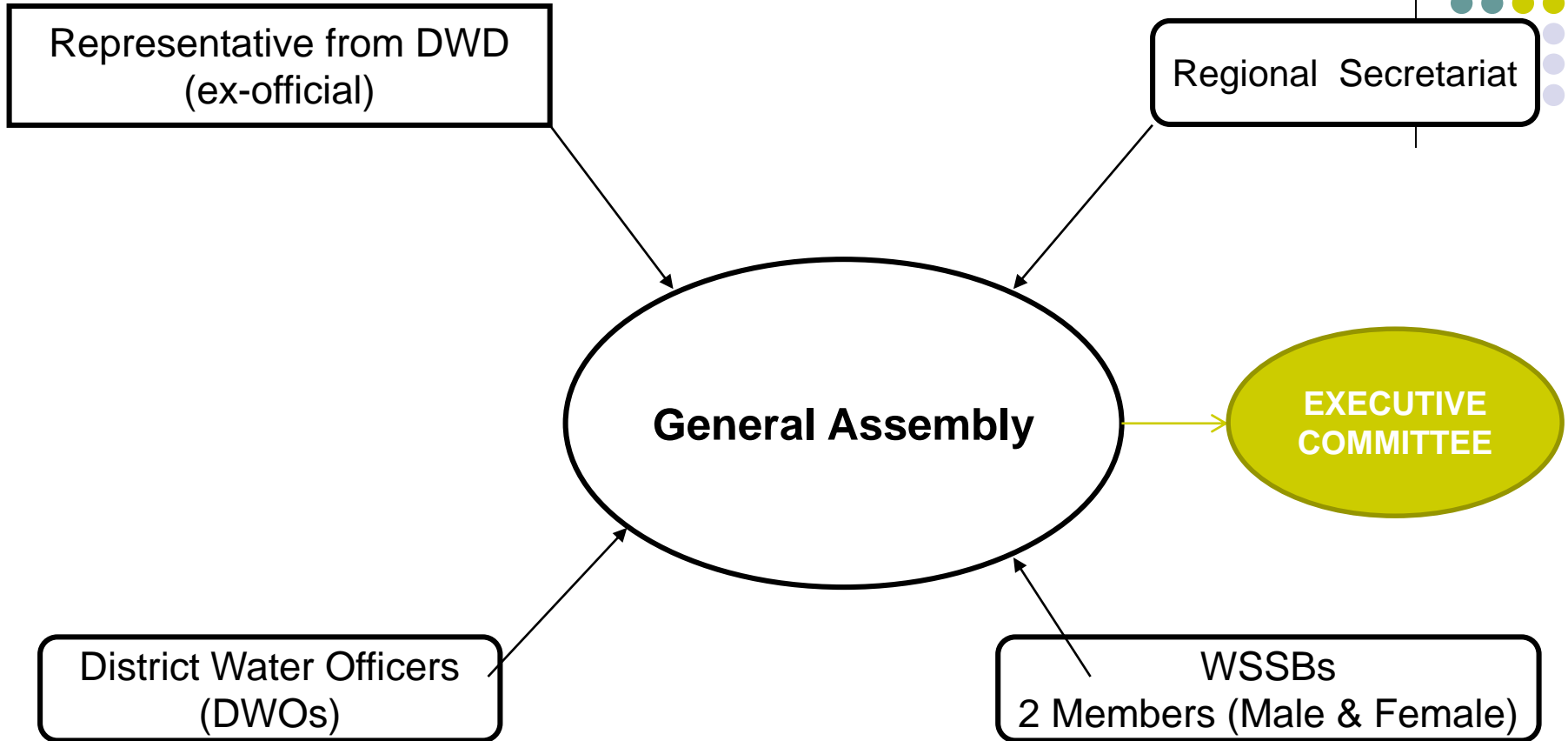
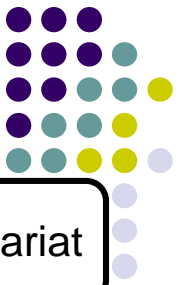
Genesis of the Umbrella Concept

- What is an Umbrella Organization?
 - It is an Association of Water Supply Boards in a particular region to pool resources and ideas to achieve sustainable water supply services
- Concept borrowed from Austria where it has been very successful.
- Motto: “*Associate for sustainability of piped water systems*”
- It was first introduced in South Western in 2001 and has since been replicated to 5 regions of Uganda
 - South Western (Kabale)
 - North (Lira)
 - Central (Wakiso)
 - Mid-West (Kyenjojo)
 - Eastern (Mbale)

Institutional Set-up

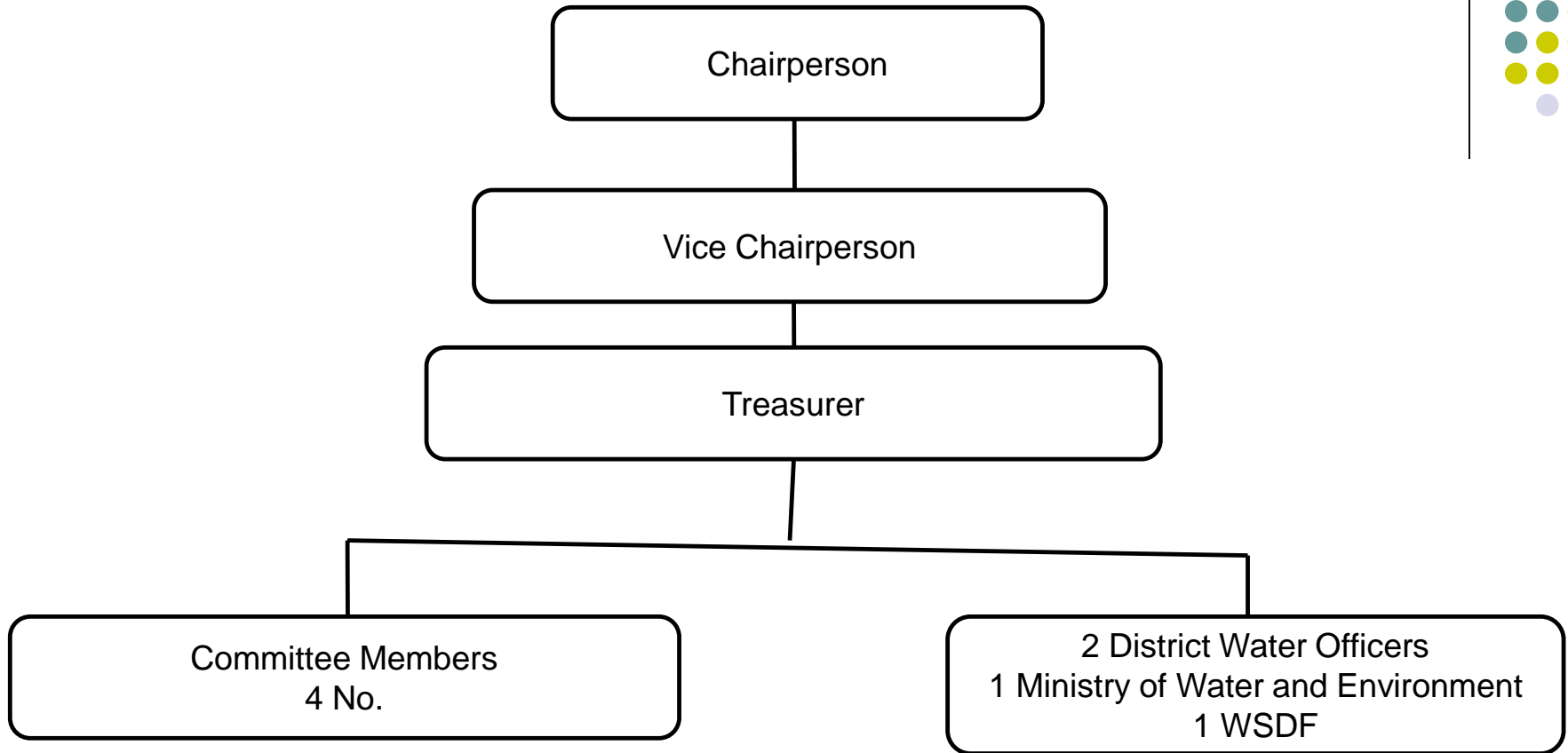
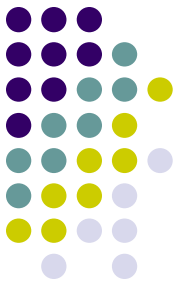


Organs of an Umbrella Organization



Key:
DWOs : All districts Water Officers in the region are members of the General Assembly
WSSB : Every water and sanitation board selects two people to attend the General Assembly
WUCs: Water User Committees

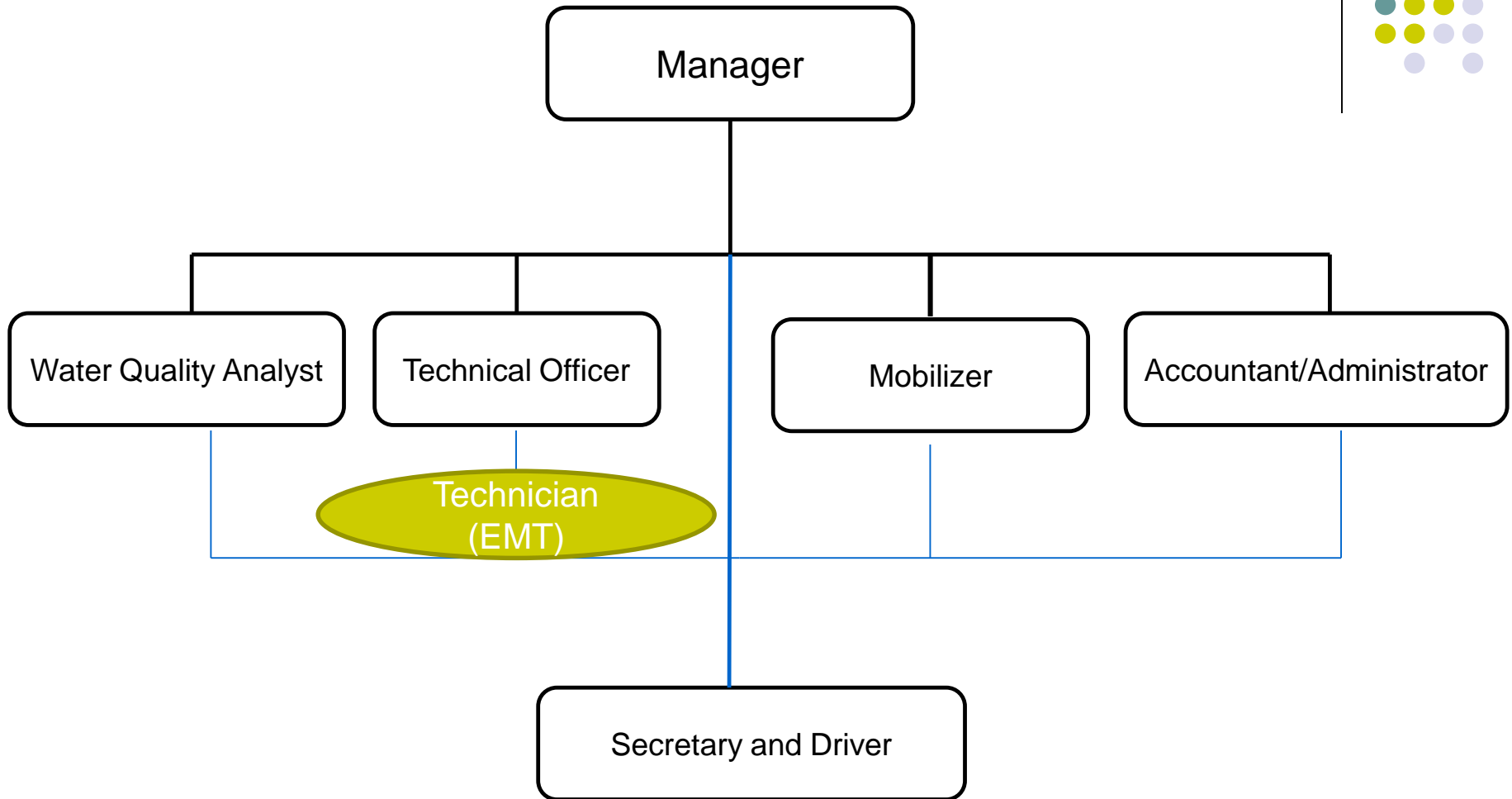
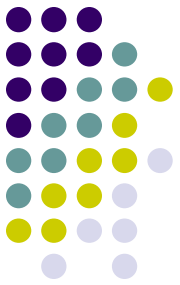
EXECUTIVE COMMITTEE STRUCTURE



Note:

The Members of the executive committee are drawn from the General Assembly.

STRUCTURE OF SECRETARIAT



Associate for sustainability of piped water systems.

Structure of the Umbrella Organizations

– Management

- The General Assembly is the highest decision making body
- The Executive Committee is mandated to develop policy and carryout management oversight
- The Secretariat is a pivotal implementing Unit of support to members schemes

– Membership

- Membership is through application and payment of registration fees. The fees vary in different regions
- Members should be from the same region

– Legal Status

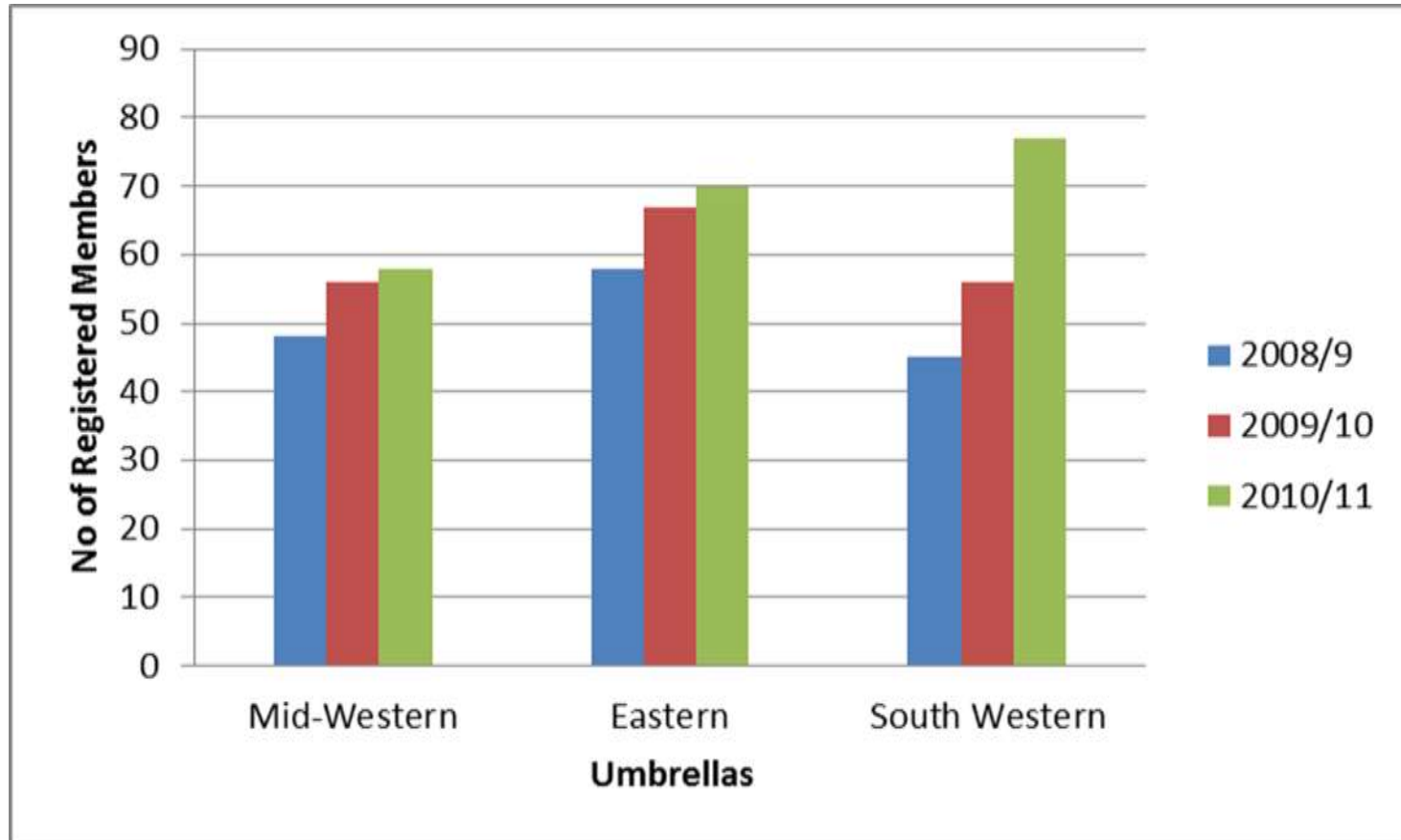
- The Umbrella is a registered entity under the Company Act of Uganda

Objectives of the Umbrellas

Objectives of Umbrella Organizations

- To organize WSSBs and to enable the advocate for their interests.
- To Create adequate organisational structures and management capabilities
- To Protect and monitor Water Quality and Quantity
- To Make technical expertise and specific spare parts available
- To Develop the capacity of member schemes to generate sufficient financial means
- To Promote innovative and sustainable technologies in water supply and sanitation
- To support members to implement the sanitation strategy
- To Ensure women's participation in decision-making
- To offers legal and audit support to members
- Act as trustees of various documentation for member schemes
- To support member schemes to increase on access and coverage

Membership over the years



Scope of services

- Training of WSSBs and Scheme Operators
- Stocking spares for access by members
- Water Quality monitoring and testing
- Auditing members schemes
- Custodian of key documentation
- New connections and extensions
- Legal services to members who require them
- Backstopping support (emergency repairs)



Scope of services ctd

- Offering a credit/ saving scheme to members
- Availing record management books to members (cash books, ledgers, meter records)
- Coordinating/ Organizing General Assemblies and Executive Committee meetings

Financing

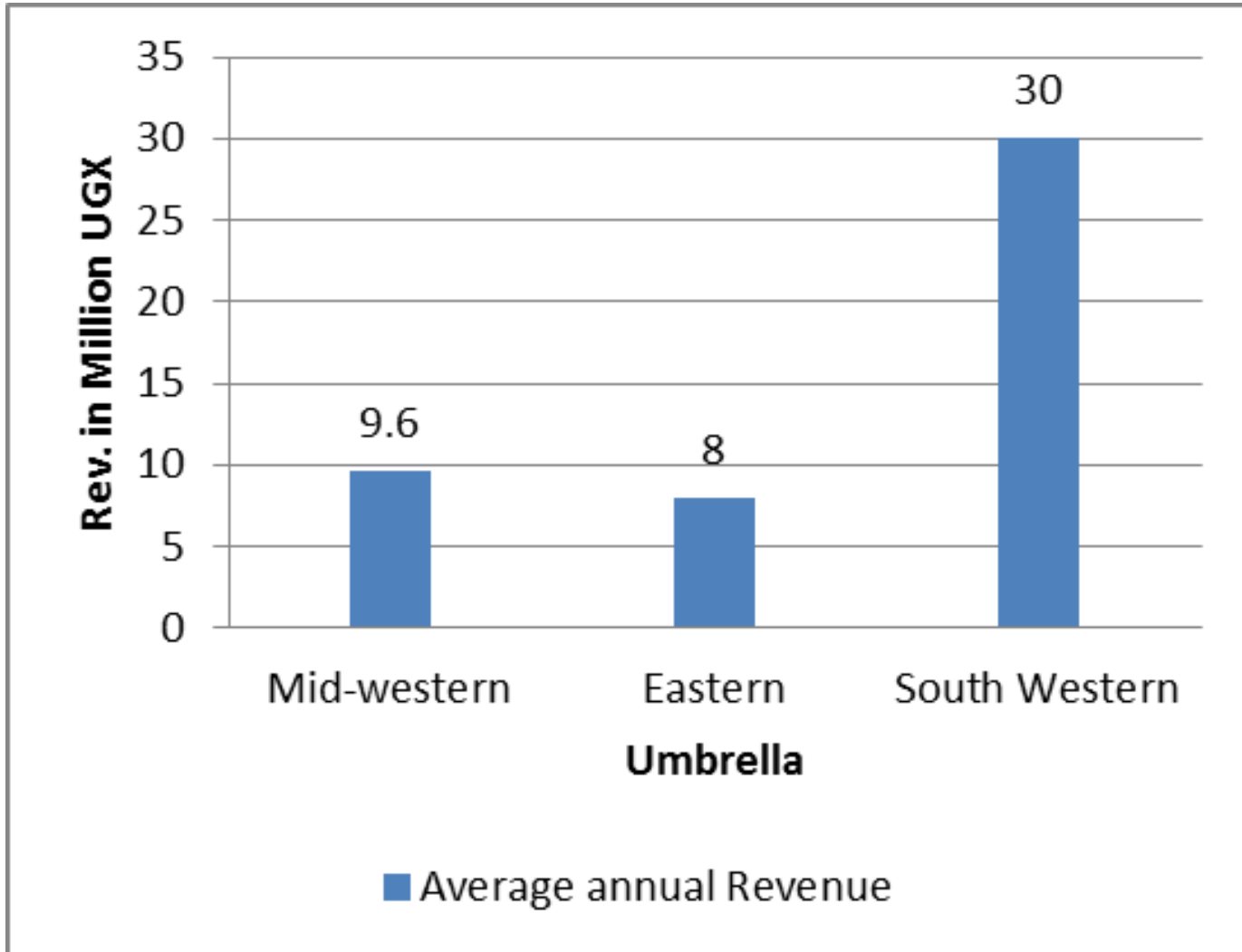
Financing of Umbrellas

Source of financing

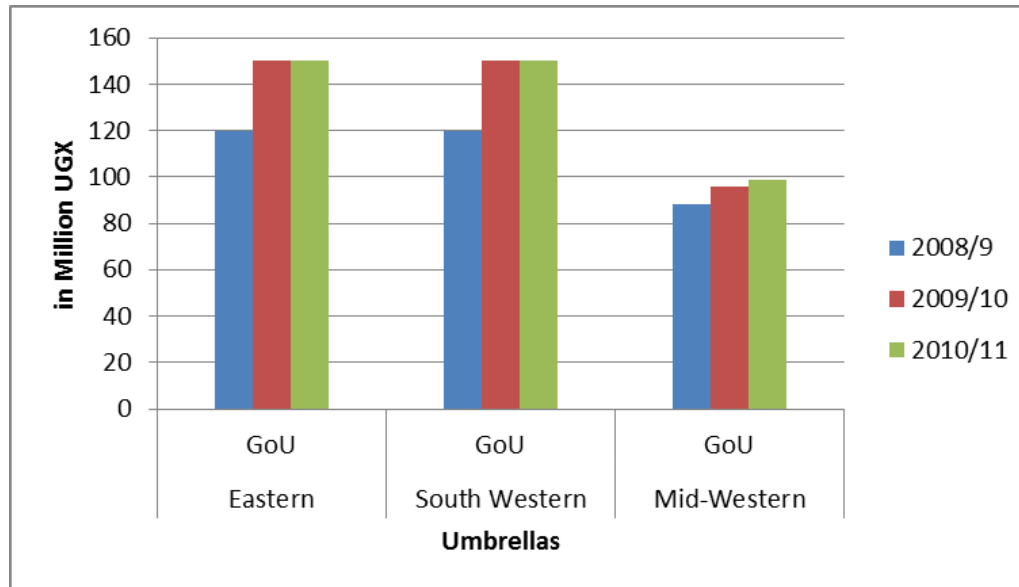
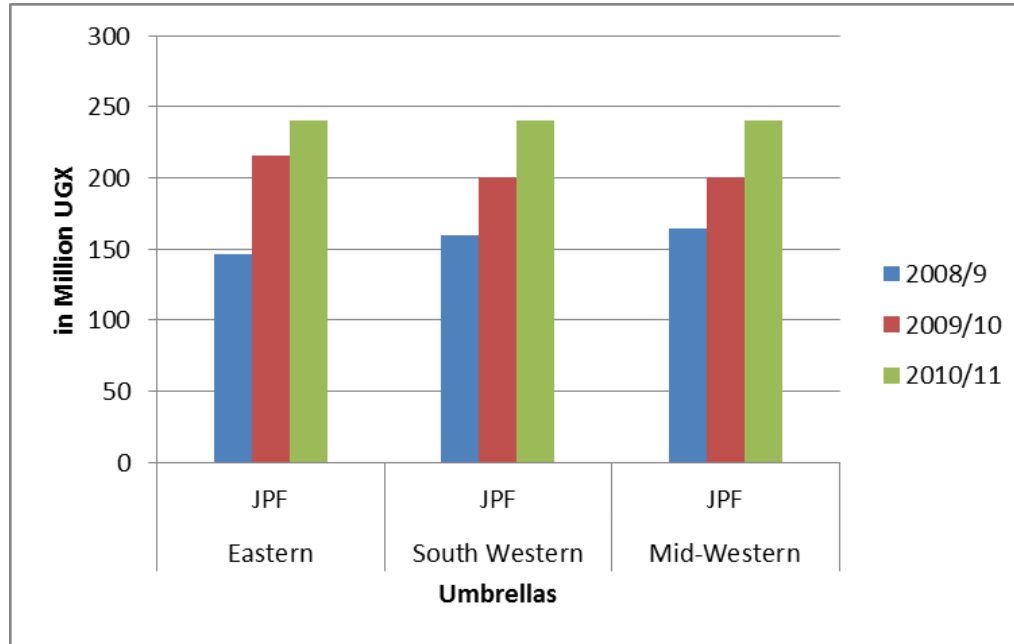
- ✓ Membership and Subscription fees from members
- ✓ Central government support through Conditional grant
- ✓ Support under the Joint Partnership Fund
- ✓ Donations from well-wishers
- ✓ Funded Successful Proposals to donors
- ✓ Umbrella services
 - Service Fees eg. Laboratory service hire
 - Rental Fees
 - Credit facilities



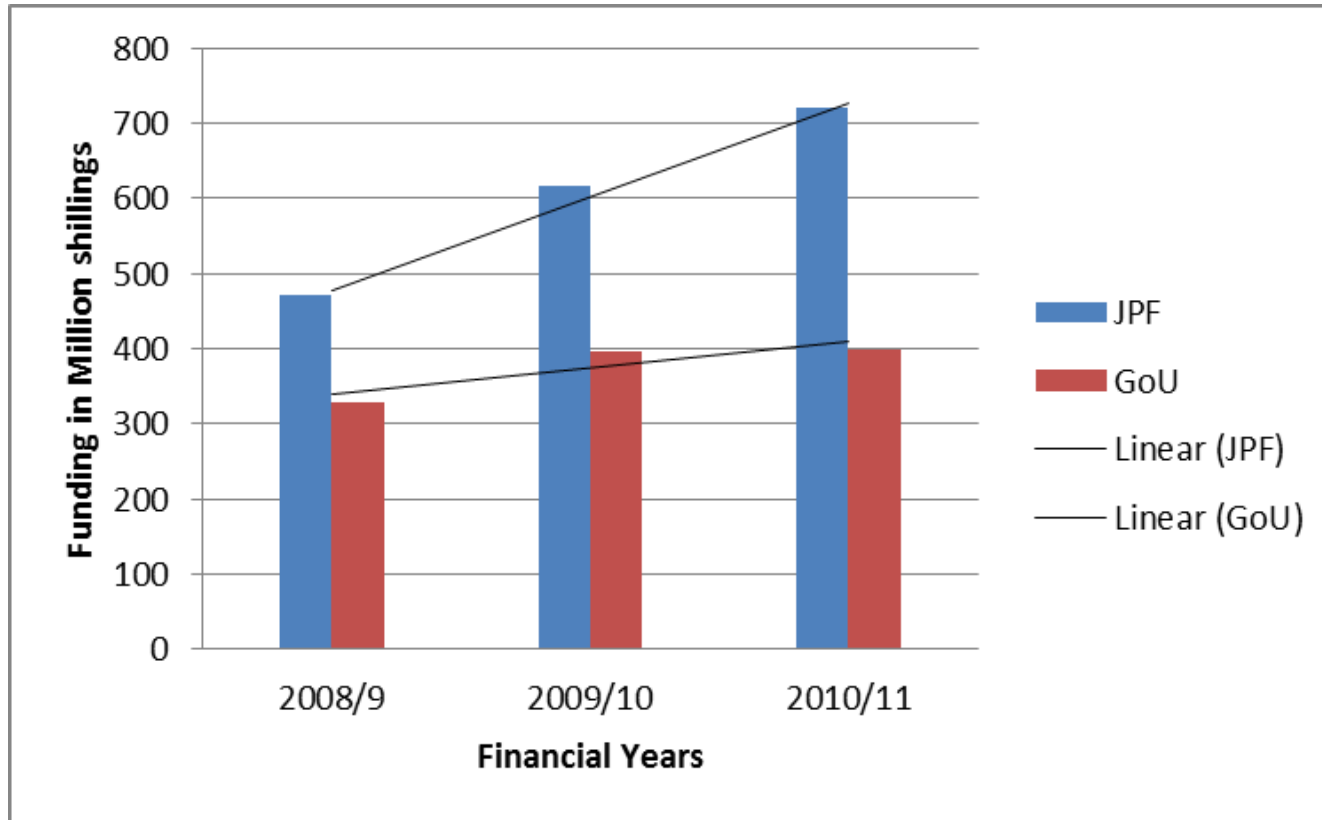
Local Revenue



Levels of funding



Levels of funding (Trends)



Required budget for all Umbrellas (when fully functional) is estimated at 2bn per year

Support by the Ministry to Umbrellas

- Direct Funding
- Water Meters (*Over 2,000 meters to-date*)
- Electro-mechanical equipment (*Pumps, Generator, Solar equipment*)
- Capacity Building of Secretariat staff
- Technical support (Jointly implemented activities)

Achievements and Challenges

Achievements

Activity	Unit	Year 2007	Year 2011
1.0 Technical inspections	No. of schemes inspected	100	193
2.0 Water quality testing	No. of samples tested	584	894
3.0 Extensions	Length of pipe work extended in km	19.4	41
4.0 New connections	No. of new connections	80	221
5.0 Provision and installation of meters	No. of meters provided/installed	534	856
6.0 Electro mechanical installations	No. of pumps / motors replaced	11	36
8.0 Training of scheme attendants	No. of scheme attendants trained	42	119

Achievements

- Increased coverage through extensions of water supply systems
- Improved functionality to approx. 80% for member schemes
- Regular water quality monitoring (quarterly).
- Increased No. of member schemes breaking even due to Umbrella support.
- Increased women involvement in decision making
- Improvement in management and technical capacities of member WSSBs/Sos (Training)

Challenges

- High expectations from member schemes and yet Umbrella budgets are still very low
- Lack of water quality equipment to carry out all the essential tests for members
- Community attitude towards payment for water is still poor (especially GFSs)
- Low metering levels
- Poor response to payment of subscription fees
- Poor attitude by communities towards acceptable Sanitation Standards
- Poor/ lack of Transport facilities to fully support members

Recommendations

Recommendations

- Formalizing the relationship between the Ministry and Umbrellas through an MoU
- Umbrellas should be supported to provide O&M services schemes since they are better placed(eg. through additional budgets)
- Umbrellas should work closely with WSDFs (planning, Budgeting and Implementation)
- Mandatory membership to the Umbrella make the approach more effective in service delivery

Future outlook

- The increased number of towns (over 600 now) implemented has resulted into a challenge for the Ministry to offer support
- The Umbrellas have been identified as a feasible mechanism of channeling O&M support to schemes
- Re-allocation of the UWSD O&M budget to the Umbrellas for better planning and implementation.
- The WSDFs allowed to budget for some O&M related investment which is currently outside their mandate

Future outlook ct'd

- Successful funded proposal with EU to build capacities of Umbrellas & supporting partners
 - *Support through Trainings, Twinning, Coaching, etc.*

THANK YOU!

